

Uungula Wind Farm

Uungula Wind Farm is a proposed development of up to 117 wind turbine generators on agricultural land approximately 14 km east of Wellington, NSW.

The project would have a capacity of approximately 400 MW, generating enough power for over 170,500 homes, saving over a million tonnes of greenhouse gas emissions every year.

An Environmental Impact Statement (EIS) is currently being prepared and a development application is expected to be lodged later this year.

Community Benefits:

A community benefits program is being developed in consultation with the community. The Project is looking for opportunities to work with local organisations to support initiatives which can provide lasting benefits to the region in areas such as education, training, employment and social outcomes.

Please get in touch using the details below if you would like to discuss an opportunity to work together.

Economic Benefits:

The economic impacts of the Project have been assessed by Essential Economics. (Report to be available in the EIS). Regionally the project is expected to deliver:

- Approximately 250 construction jobs
 - Approximately 25 full time jobs during operations
- Additionally, there will be significant flow on effects for the region including:
- An estimated \$5.6 million in additional spending likely be directed to local and regional businesses within Wellington and Dubbo during construction
 - This level of spending would support approximately 30 full time jobs in the service sector



Traffic and Transport:

The primary site access will be on Twelve Mile Road, approximately 13km east of Goolma Road. Secondary site entrances are shown on the map on the following page.

- A construction traffic and transport assessment is currently underway to evaluate required road upgrades.
- CWP Renewables is working with Council to evaluate dilapidation and maintenance requirements for the local road network.
- A Traffic Management Plan will be developed to adequately manage impacts to the community.

Uungula Wind Farm

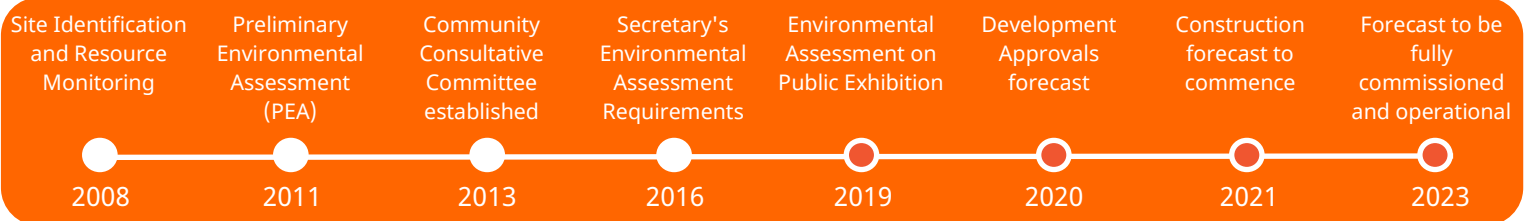
Project Design Update

The Project Design has changed extensively in response to community feedback, environmental investigations, and technological advancements over time.

Recently we have made the decision to remove eight wind turbine generators (WTGs) from the design. This will reduce disturbance to the community during construction, ground disturbance, and impacts to visual amenity in the area. We have also relocated the concrete batching plant away from Twelve Mile Road due to noise concerns.

The Project will comprise up to 117 turbines up to 250 m in height with a rotor of approximately 170 m in diameter. See the map to the left for the revised Project Design.

The project team will be within the area regularly to answer questions, understand concerns and provide mitigations where appropriate to limit the impacts of the project on local residents. Please get in touch using the details below.



Planning and Approvals

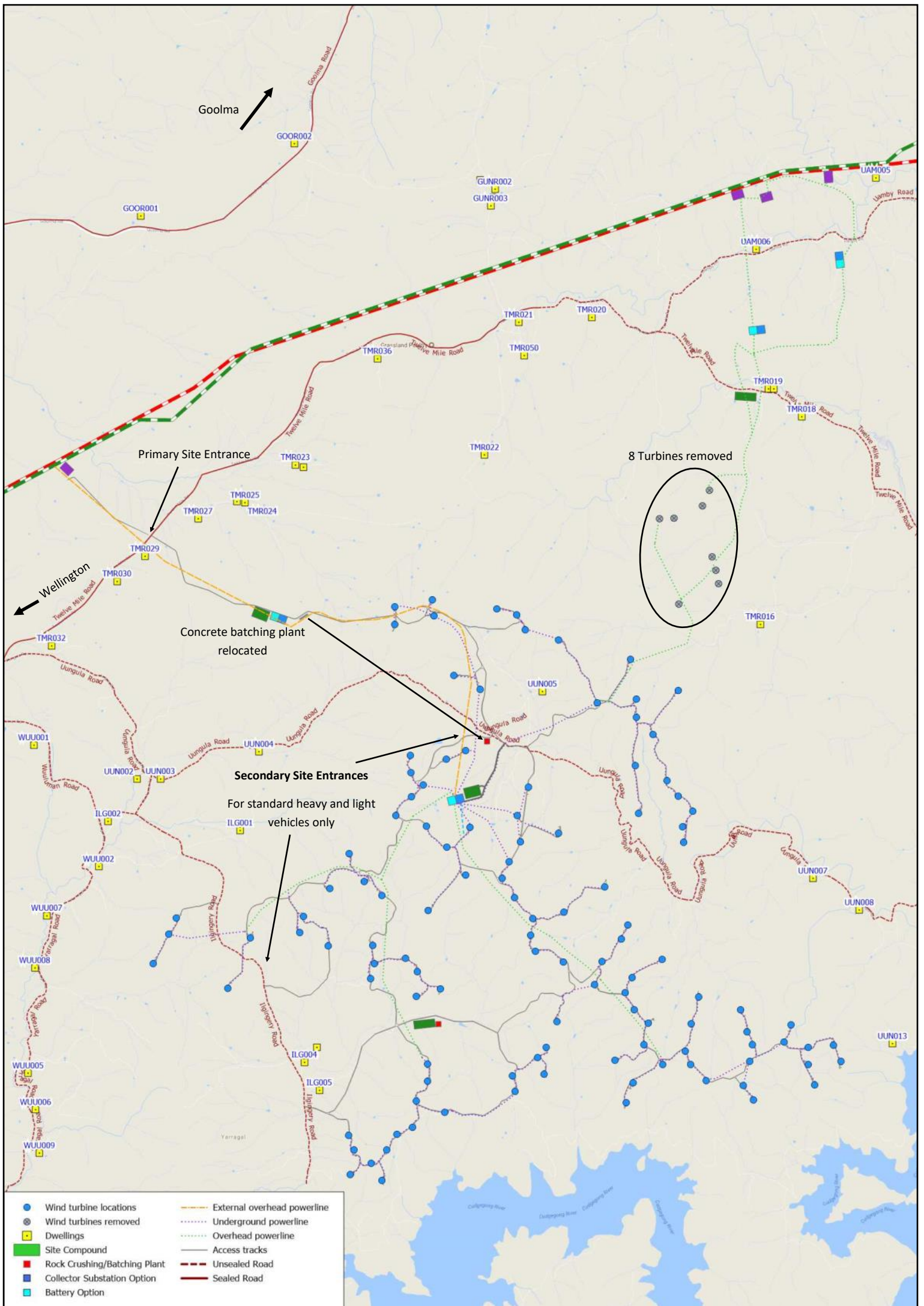
An Environmental Impact Statement (EIS) is currently being prepared for the revised project in accordance with the NSW Wind Energy Framework.

The EIS is expected to be released for public exhibition in late 2019. Public submissions on the EIS are welcomed and the community will be notified once it is released.

A public open day will be held prior to the lodgement of the EIS.

The following technical studies are now being finalised and will be included in the EIS:

- Landscape and visual impact assessment
- Noise and vibration impact assessment
- Biodiversity assessment report
- Cultural heritage impact assessment
- Economic Impact Assessment
- Transport Route Study
- Traffic and transport impact assessment
- Aviation Impact Assessment





CWP Renewables

45 Hunter Street Newcastle NSW

Phone: +61 (02) 4013 4640

Email: info@cwprenewables.com

CWP Renewables is a leading renewable energy developer, owner and asset manager with full project life-cycle expertise. Our team holds a wealth of experience in the renewable energy sector, accumulated through the successful delivery of projects in Europe and Australia.

We develop and own utility-scale renewable energy facilities incorporating wind, solar and storage technologies, oversee project delivery and commissioning, and provide long-term operational asset management services. Our unique approach to own and manage each project from inception through to full operation ensures genuine engagement with all stakeholders at every stage of development.

CWP Renewables has been developing projects in Australia since 2007. Key development activities are coordinated from our offices in Newcastle and Sydney, with asset management services delivered from Canberra.

Our geographically dispersed portfolio of wind and solar projects is unique in the marketplace, combining generation profiles from different technologies and includes storage. This portfolio of aggregated, complimentary and manageable generation can be forecast and sold into the National Energy Market (NEM) or direct to end users, setting us apart from single technology renewable energy project developers in the sector.

Our commitment to delivering combined and complimentary renewable energy generation from our portfolio can be seen in the New England region of NSW, where construction of our 270 MW Sapphire Wind Farm is well underway, and where we are developing a complementary 200 MW solar and battery storage facility. These two projects will combine to deliver low-cost manageable renewable energy generation in to the NEM and/or direct to end use customers.

Find out more about CWP Renewables on our website:
www.cwprenewables.com